
Current Mode PWM Controller with Frequency Shuffling

General Description

WT5595H integrates a PWM controller and high voltage power MOSFET of 1000V/2A. WT5595H has the features of very low standby power (<100mW) when AC power above 220Vac. And cost effective offline flyback converter applications in 12W range (With radiator 16W).

WT5595H offers complete protection coverage with Cycle-by-Cycle current limiting (OCP), over temperature protection (OTP), over load protection (OLP), and VCC under voltage lockout (UVLO) and over voltage protection (OVP).

Typical Application

- Meter power supply
- Electrical Supply
- Instrument adapter
- Industrial power

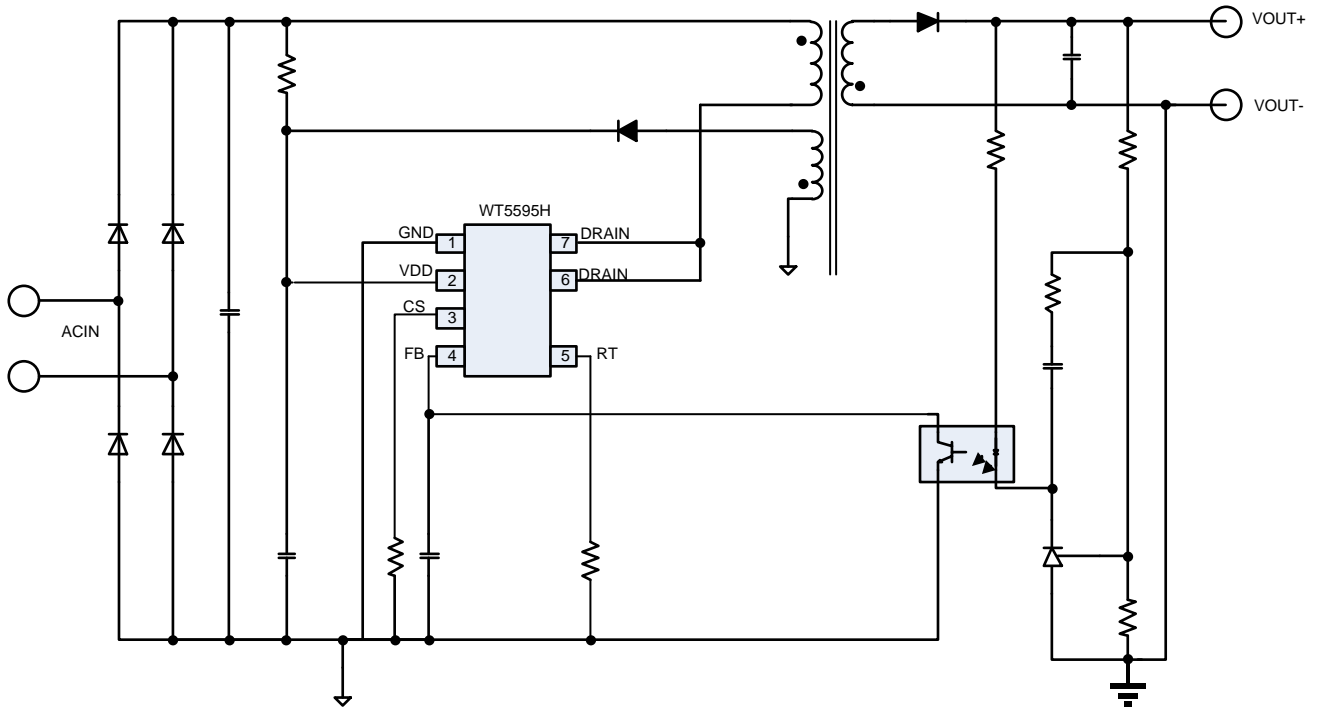
Features

- Low startup current
- Audio Noise Free Operation
- Burst Mode Control
- Frequency Shuffling Technology
- Compensation for ac-in
- Leading Edge Blanking
- Internal Synchronized Slope Compensation
- Good Protection Coverage With Auto Self-Recovery: OCP, OLP, UVLO, OVP, OTP

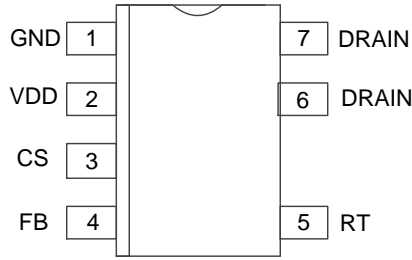
Package

- 7-pin DIP7

Typical Application Circuit



Pin Configuration & Pin Assignment

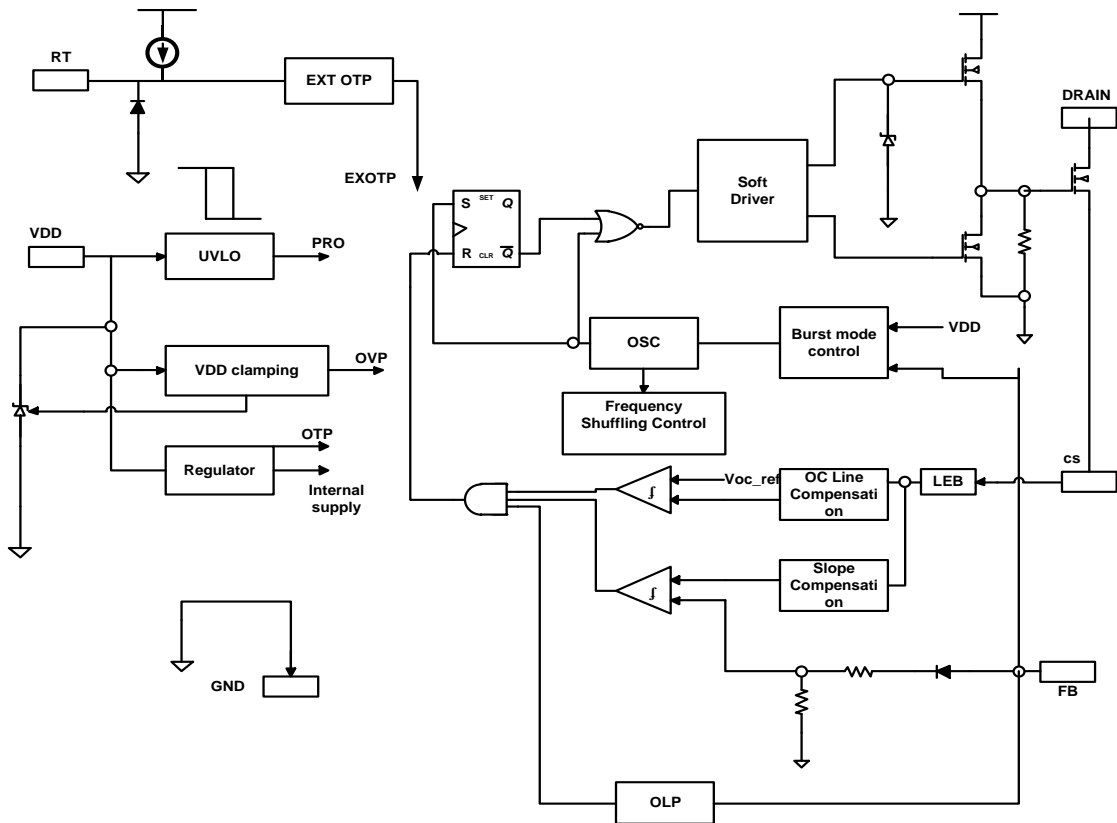


DIP7

PIN Assignments

Symbol	Pin Num.	Functions	Description
GND	1	Ground	Ground
VDD	2	Power Supply	Power Supply
CS	3	Input	Current Sense
FB	4	Input	Feedback
RT	5	Input	External NTC
DRAIN	6, 7	Input	Drain of the MOS

Block Diagram



Absolute Maximum Ratings

Parameter	Range	Unit
DRAIN Input Voltage	1000	V
VDD Input Voltage	-0.3~30	V
VDD Input Current	0~5	mA
CS, FB Input Voltage	-0.3~7	V
Thermal resistance (Junction to air) θ_{JA}	74	°C/W
Continuous Total Power Dissipation P_D	1.69	W
Operating ambient temperature : T_A	-20~85	°C
Storage Temperature T_{stg}	-55~150	°C
Maximum junction temperature T_J	-40 ~ 150	°C
Welding Temperature	+260 (10sec)	°C

Recommended Operating Condition

Parameter	Range	Unit
VDD Input Voltage	10~30	V
Operating Ambient Temperature	-20~85	°C

Electrical Characteristics (TA = 25°C, VDD=16V, if not otherwise noted)

Symbol	Parameter	Test Conditions	Min	Typ.	Max	Unit
Supply Voltage (VDD)						
I_s	Start-Up Current Sourced from VDD Pin	VDD= UVLO _{OFF} -1V , Current flowing into VDD	-	5	20	μA
I_o	Operation Current	V _{FB} =3V	-	1	2	mA
UVLO _{ON}	Under-Voltage Lockout Voltage of VDD Pin		8	9	10	V
UVLO _{OFF}	Start-Up Voltage of VDD Pin		14	15	16	V
VDD _{Clamp}	Clamp Voltage of VDD Pin	I _{VDD} = 5 mA	32	35	37	V
OVP _{ON}	OVP Voltage of VDD Pin		28	30	32	V
OVP _{OFF}	OVP off Voltage of VDD Pin		24	26	28	V
OTP			145	155	165	°C
Feedback(FB)						
AV _{SENSE}	PWM Input Gain		-	2	-	V/V
Maximum duty cycle	Maximum Duty Cycle	VDD=16V , V _{FB} =3V , V _{CS} =0V	75	80	85	%
V _{FB_Open}	FB pin Open Loop Voltage		4.5	5	5.5	V
I _{FB_Short}	FB pin short circuit current		-	0.4	-	mA
V _{REF_GREEN}	The threshold enter green mode		-	1.8	-	V

V _{REF_BURST_H}	The threshold exit burst mode		-	1.1	-	V
V _{REF_BURST_L}	The threshold enter burst mode		-	1	-	V
V _{TH_PL}	Power Limiting FB Threshold Voltage		-	3.5	-	V
T _{D_PL}	Power limiting Debounce Time		30	38	46	mS
Current Sense Input(CS)						
T _{blanking}	Leading edge blanking time		-	220	-	nS
T _{D_OC}	Over Current Detection and Control Delay		-	120	-	nS
V _{TH_OC}	Over Current Threshold Voltage at zero Duty Cycle	FB=3.3V	0.7	0.75	0.8	V
Oscillator						
F _{OSC}	Normal Oscillation Frequency	VDD=16V,FB=3V,CS=0V	60	67.5	75	KHz
Δf _{Temp}	Frequency Temperature Stability	VDD = 16V, TA -20°C to 140 °C		5		%
Δf _{VDD}	Frequency Voltage Stability	VDD = 9-25V,		5		%
Δf _{OSC}	Frequency Modulation range /Base frequency		-	±6	-	%
F _{shuffling}	Shuffling Frequency		-	32	-	Hz
F _{Burst}	Burst Mode Base Frequency		-	25	-	KHz
Drain of the MOSFET (DRAIN)						
BV _{dss}	Drain-Source Voltage	V _{gs} =0	1000	-	-	V
R _{on}	Static Drain-Source On-Resistance	V _{GS} =10V, I _d =3.5A	-	-	6.5	Ω
I _D	Continuous drain current		-	2	-	A

Operation Description

The WT5595H is a low power off-line SMPS Switcher optimized for off-line flyback converter applications in 20W power range. The 'Extended burst mode' control greatly reduces the standby power consumption and helps the design easily to meet the international power conservation requirements.

Startup Current and Start up Control

Startup current of WT5595H is designed to be very low so that VCC could be charged up above UVLO threshold level and device starts up quickly. A large value startup resistor can therefore be used to minimize the power loss yet provides reliable startup in application. For a typical AC/DC adaptor with universal input range design, a 2 M Ω , 1/8 W startup resistor could be used together with a VCC capacitor to provide a fast start up and low power dissipation design solution.

Frequency shuffling for EMI improvement

The frequency Shuffling/jittering (switching frequency modulation) is implemented in WT5595H. The oscillation frequency is modulated with a random source so that the tone energy is spread out. The spread spectrum minimizes the conduction band EMI and therefore reduces system design challenge.

Current Sensing and Leading Edge Blanking

Cycle-by-Cycle current limiting is offered in WT5595H current mode PWM control. The switch current is detected by a sense resistor into the sense pin. Each time the power MOSFET is switched on, a turn-on spike will inevitably occur at the sense resistor. To avoid fault trigger, a 220ns leading-edge blanking time is built in. Conventional RC filtering can therefore be omitted. During this blanking period, the current-limit comparator is disabled and cannot switch off the gate driver.

Extended Burst Mode Operation

At zero load or light load condition, majority of the power dissipation in a switching mode power supply is

loss of the transformer and the loss on the snubber circuit. The magnitude of power loss is in proportion to the switching frequency. Lower switching frequency leads to the reduction on the power loss and thus conserves the energy.

The switching frequency is internally adjusted at no load or light load condition. The switch frequency reduces at light/no load condition to improve the conversion efficiency. At light load or no load condition, the FB input drops below burst mode threshold level and device enters Burst Mode control. The Gate drive output switches only when VCC voltage drops below a preset level and FB input is active to output an on state. Otherwise the gate drive remains at off state to minimize the switching loss and reduces the standby power consumption to the greatest extend. The nature of high frequency switching also reduces the audio noise at any loading conditions.

Protection Controls

Good power supply system reliability is achieved with its rich protection features including Cycle-by-Cycle current limiting (OCP), Over Load Protection (OLP), CS short protection, CS floating protection, over voltage protection (OVP), and Under Voltage Lockout on VCC (UVLO).

The OCP is line voltage compensated to achieve constant output power limit over the universal input voltage range.

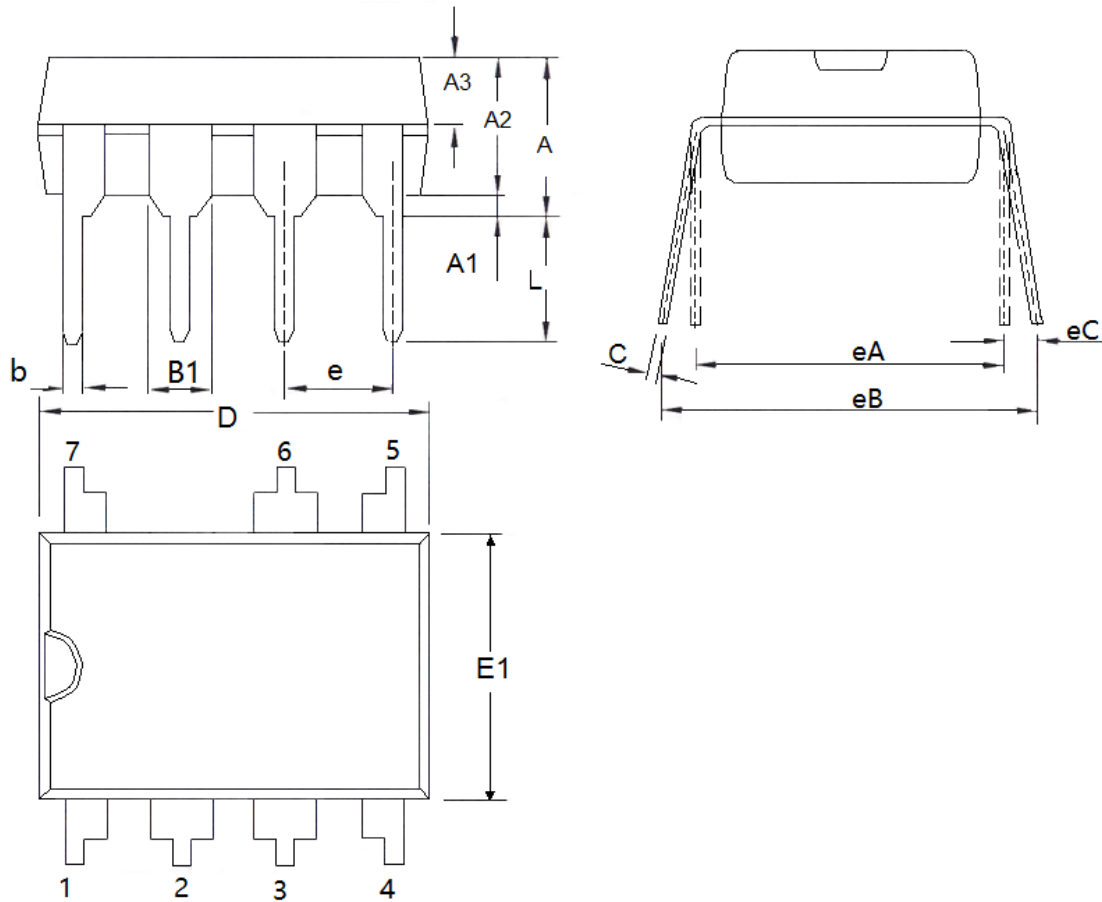
At overload condition, When FB input exceeds power limit threshold value for more than T_{D_PL} , control circuit reacts to shut down the Input power MOSFET. Similarly, control circuit reacts to shut down the switcher. Switcher restarts when VCC voltage drops below UVLO limit.

Package Quantity

Package Type	Minimum Packing QTY	UNITS	Small Box	Large BOX
DIP7	50	Tube	2K	20K

Packaging Information

- Packaging Type: DIP7



DIM	Millimeters		Inches	
	Min	Max	Min	Max
A	3.6	4.31	0.1417	0.1697
A1	0.5(TYP)		0.0197(TYP)	
A2	3.2	3.6	0.1260	0.1417
A3	1.47	1.65	0.0579	0.0650
b	0.38	0.57	0.0150	0.0224
B1	1.52(TYP)		0.0598(TYP)	
C	0.2	0.36	0.0079	0.0142
D	9	9.4	0.3543	0.3700
E1	6.1	6.6	0.2402	0.2598
e A	7.62(TYP)		0.3(TYP)	
e B	7.62	9.3	0.3000	0.3661
e	2.54(TYP)		0.1(TYP)	
e C	0	0.84	0.0000	0.0331
L	3	3.6	0.1181	0.1417